

System W 30 T

Highly elastic rail fastening for
conventional rail and heavy haul –
Efficient solution for application in switch
sleepers with and without inclination

System W 30 T

Elastic. Safe. Loadable. Flexible.

Approved fastening – optimized for concrete sleepers in switches

For the international, dramatically increasing market of heavy duty switches, Vossloh has developed the W 30 T system on the basis of the W 30 fastening system. Currently applied in test tracks in Russia, it can be adapted to the most different requirements in the field of ballasted track construction; for instance, by inclined plates, that allow rail inclination of 1:20 or 1:40.

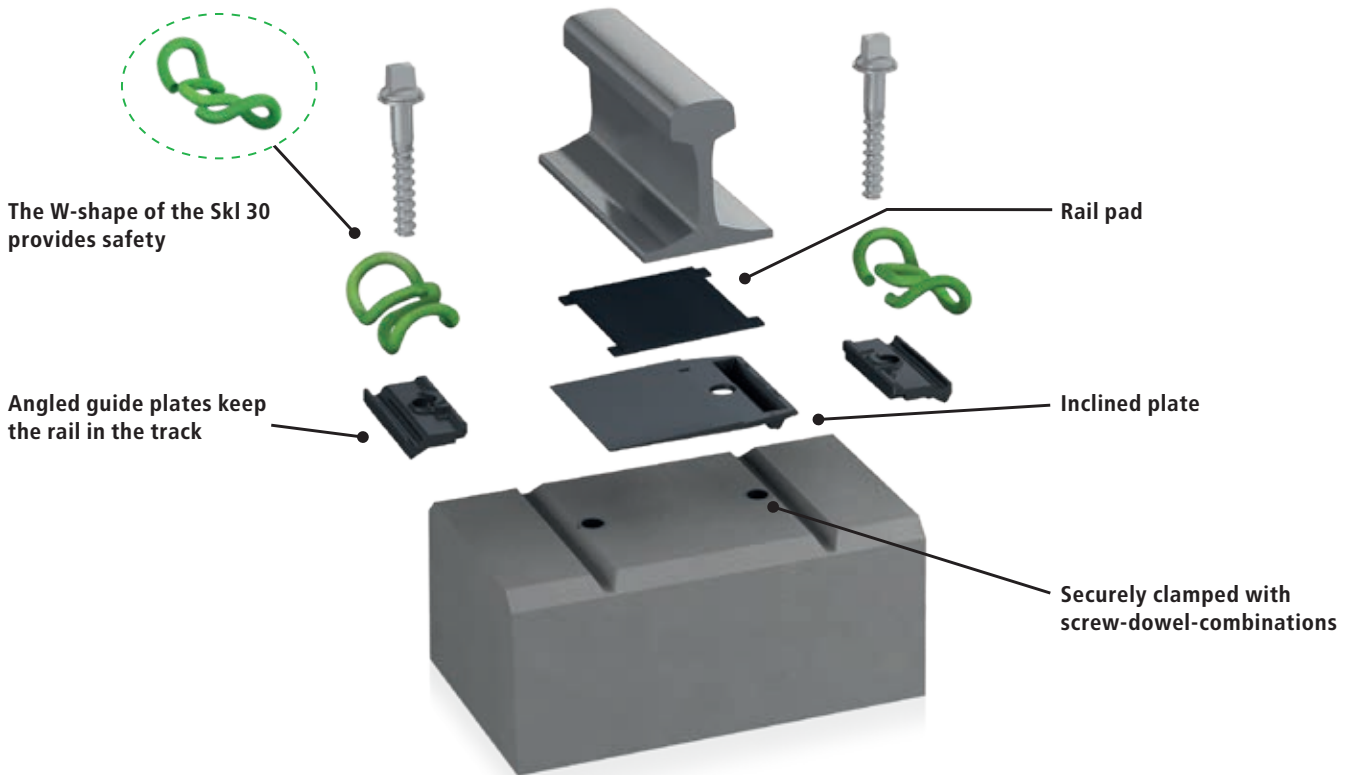
Currently, concrete sleepers with inclinations for switches are only available on the market at high costs. With the new inclined plate, Vossloh is offering to its customers a low-cost and simple solution for the inclination of rails in W-switches with non inclined concrete sleepers. With this, expensive indirect fastening systems with ribbed plates can be replaced.

Please find further information in our brochures about the Systems W 30 and W 30 HH.



Vossloh protect:

The new coating for tension clamps, sleeper screws and T-head bolts (incl. nuts and washers) – for a consistent and high coating quality.



Remark:

Contents, figures and technical data in this brochure display the performance of the fastening system, however, they always depend on external conditions. Please contact us to enable us to develop a solution for you that will be customized to your requirements. The information presented corresponds to the technical state at the time of printing; in the meantime, continuous research and development programmes at Vossloh could cause adaptations of the product.

 www.vossloh.com

Vossloh Fastening Systems GmbH
Vosslohstraße 4
D-58791 Werdohl

Phone +49 (0) 23 92 52-0
Fax +49 (0) 23 92 52-448
E-Mail info.corecomponents@vossloh.com

The following trademarks in this website, **vossloh**, **cellentic** and **amalentic** are registered trademarks of the Vossloh group, which are internationally protected in many countries. These trademarks may only be used with prior consent by Vossloh AG. This publication may also contain trademarks of third parties. The use of those trademarks is subject to the terms of use of the respective owner.