



System 300 W

Highly elastic rail fastening for high speed and conventional rail – the efficient solution for application in switches for slab tracks

System 300 W

Elastic. Safe. Resilient. Flexible.



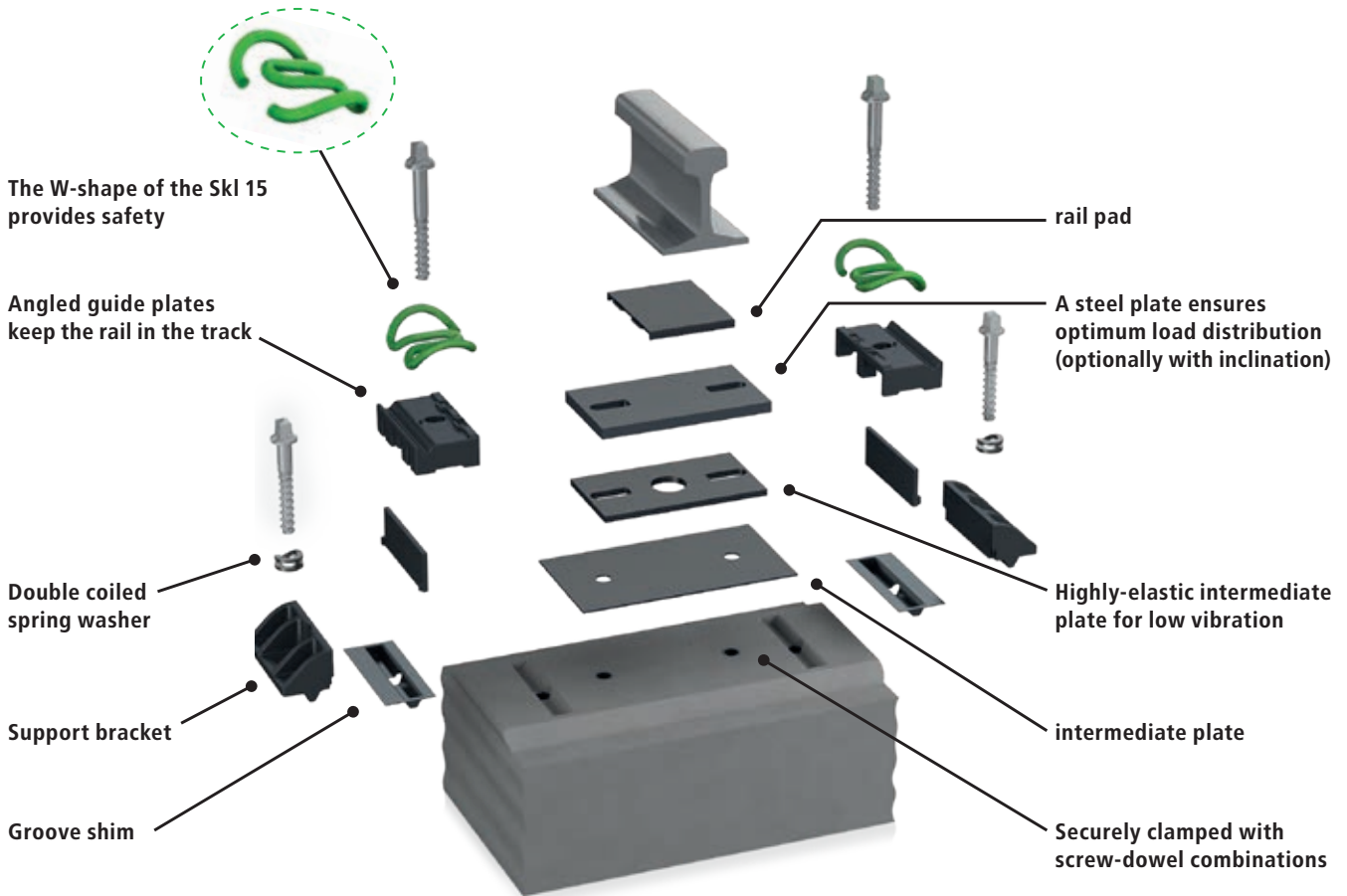
Approved fastening – optimized for switches in slab tracks

For the international, growing market of high speed switches and crossings, Vossloh has developed the 300 W system on the basis of the approved 300 fastening system. Built of modules, it can be adapted excellently to different requirements. Reference projects for their application can be found in China, in the Channel Tunnel and in Germany (German Unity Transport Project).

Please find further information in our brochure about the System 300.

Vossloh protect:

The new coating for tension clamps, sleeper screws and T-head bolts (incl. nuts and washers) – for a consistent and high coating quality.



Remark:

Contents, figures and technical data in this brochure display the performance of the fastening system, however, they always depend on external conditions. Please contact us to enable us to develop a solution for you that will be customized to your requirements. The information presented corresponds to the technical state at the time of printing; in the meantime, continuous research and development programmes at Vossloh could cause adaptations of the product.

 www.vossloh.com

Vossloh Fastening Systems GmbH
Vosslohstraße 4
D-58791 Werdohl

Phone +49 (0) 23 92 52-0
Fax +49 (0) 23 92 52-448
E-Mail info.corecomponents@vossloh.com

The following trademarks in this website, **vossloh**, **cellentic** and **amalentic** are registered trademarks of the Vossloh group, which are internationally protected in many countries. These trademarks may only be used with prior consent by Vossloh AG. This publication may also contain trademarks of third parties. The use of those trademarks is subject to the terms of use of the respective owner.