

Vossloh Cogifer centre of expertise

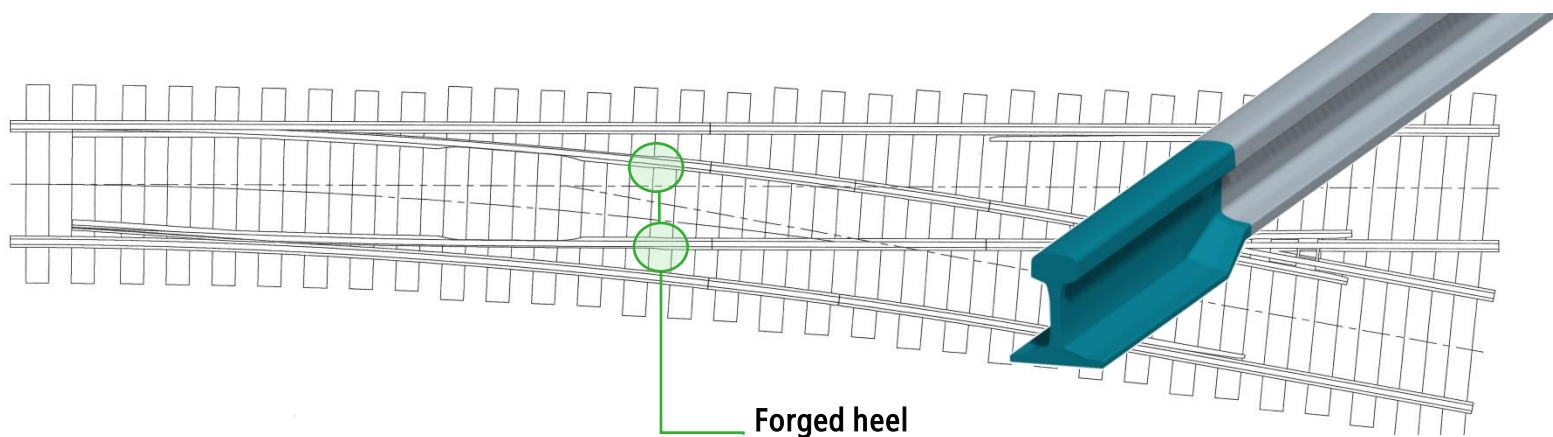


The world's largest production capacity for forged tongues

Vossloh Cogifer forging centre of expertise

Vossloh Cogifer is a world leader in production of points and crossings and their associated equipment, for all types of rail networks.

In both conventional and very high-speed rail applications, the forged tongue is a key component in track points and crossings. The profile of the switch rail is different from that of the connecting rail, which has a running profile. Forging is performed at the heel of the switch rail, enabling the intermediate railway to be welded to the adjacent rail.

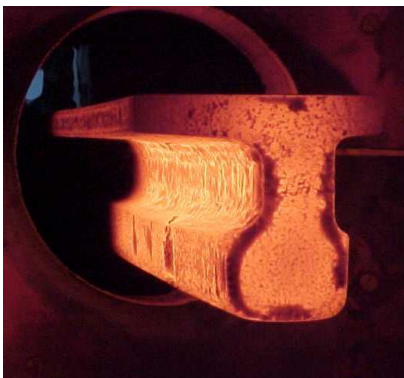


Today, to meet the growing demand on the market, Vossloh Cogifer can produce over 20,000 forged tongues a year..

Founded in 1893, the Luxembourg subsidiary of Vossloh, Vossloh Cogifer Kihn, has for decades manufactured forged tongues for the group as a whole, as well as for many national rail networks (DB, RFI, SNCF, etc.).

This is a demanding market, in terms of quality and safety, and Vossloh Cogifer Kihn supplies forged tongues all over the world, to any standard required.

With this expertise, in 2007, Vossloh Cogifer contributed to the record-breaking high speed railway journey by a train on the Paris-Strasbourg (France) line, crossing points at 560 km/hr.



The new forging unit brings together all the expertise and industrial excellence of Vossloh Cogifer, in terms of quality, safety and environmental protection.

By setting up this new, global centre of expertise, Vossloh Cogifer has strengthened its position as a world leader in forged tongue manufacture.

Increasing its production capacity enables Vossloh Cogifer to provide greater flexibility, and a faster response to its customers' needs.

PRODUCTS

- ▶ Forged tongues, with long, semi-long or short heels
- ▶ Welded forged tongues
- ▶ Several profiles and grades already available



PROFIL	NUANCES	PROFIL	NUANCES
49E1A1/45E2	R260	54E1T2/54E1	R260
49E1A1/46E1	R260	54E2A1/54E2	R260, 350HT
49E1A1/46E2	R260	54E4A2/54E4	R260, 350HT
49E1A1/49E1	R260, 350HT	60E1A1/115RE	350HT
49E1A1/50E2	350HT	60E1A1/60E1	R260, 350HT,
49E1A1/54E3	R260	60E1A1/60E2	R260, MHH
49E1A1/54E4	350HT	60E1A1/AS60	350HT
54E1A1/54E1	R260	60E1A2/60E1	R260
54E1A1/56E1	R260, HP	60E1A4/60E1	R260, 350HT, bainitique,
54E1A1/60E1	350HT	60E1A5/60E1	R260, 350HT,
54E1A2/50E2	R260, 350HT	60E1T1/60E1	R260
54E1A2/50E3	R260, 350HT,	60E2A2/60E1	R260
54E1A2/54E3	R260, 350HT		R260, 350HT
54E1A2/54E4	350HT	60E1A1/60E1	350Ht
54E1A3/54E1	350HT	49E1A5/49E5	R260,350HT
54E1A4/54E1			

Vossloh Cogifer Kihn considers any special requirement from its customers

MANUFACTURING PROCESS

- ▶ Induction heating
- ▶ Fully computerized hydraulic forging (50,000 kN capacity)
- ▶ Heat treatment
- ▶ Straightening
- ▶ Machine-finished to required tolerance with self-adjusting clamping of the heel
- ▶ Flash-butt welding
- ▶ Grinding and shot-blasting
- ▶ Automatic feed



Forging centre of expertise



QUALITY

- ▶ Final non-destructive check on all parts, by ultra-sound and VTR, by qualified and certified operators.
- ▶ Parts certified by independent laboratories to EN and international standards.

FORGING UNITS OF GROUP

- ▶ Vossloh Cogifer Kihn (Luxembourg)
Forge Schuler - 2014



- ▶ Vossloh Cogifer Kihn (Luxembourg)
Forge ACB - 1991



- ▶ Wuhu China Railway Cogifer
Track Co Ltd (China) - 2013

Vossloh Cogifer SA
21 avenue de Colmar
92566 Rueil Malmaison Cedex - FRANCE
Tel: 33 (0) 1 55 47 73 00
Fax : 33 (0) 1 41 29 19 18
info@vossloh

Vossloh Cogifer Kihn
17, rue de l'Usine
3701 Rumelange-Luxembourg
Tel: +352 56 47 71-1
Fax: +352 56 58 54

www.vossloh.com

FTC40_CEF_V2_21/07/2017