



V-SIG Product line



A product range dedicated to signalling products

V-SIG Product line

High-reliability products and solutions focused on safety and availability

Vossloh is a world leader in railway signalling products and solutions. We cover a wide scope of signalling solutions such as: signalling data transmission system with SIL2 certification, level crossing control system, ALD (actuation, locking and detection) equipment.

We offer a full range of actuation products, locking systems, switch position detectors and other equipment able to fulfill the highest safety and availability requirements for all kind of networks (high speed, conventional, heavy-haul, urban...).

Signalling solutions



Safety transmission system

SIL2 homologated, this system can link a remote control centre, computerized or with control panel, to solid state or relay-based interlocking stations.

Control system MAPA

Management of stations on heavy haul lines, with LED points and signals control. Based on wireless transmission between wayside equipment (safety level equivalent to SIL2) and power supplied by solar panel.



Level crossing control system – US standard

In order to control level crossing gates or to alert a team carrying out work on the track, Vossloh offers a Level Crossing Control System solution (or LX Control System) using traffic detectors (track circuits) to detect the passing of a train and its direction (on option). The LX Control System includes Vossloh's Universal Vital Platform (UVP) and a combination of a master Vital Processing Unit (VPU).

Modular signaling solutions (US standards)



Safety processor (object controller)

Universal Vital Platform: Master Vital Processing Unit which provides a communications control processing core paired with one or more signal system interface modules. Positive Train Control ready for direct connection to the Positive Train Control radio interface unit. Designed for AREMA standards.

Track circuit, timer and radio interfaces

Communication Control Processor-Dual-Tone-Multi-Frequency (CCP-DMTF): DTMF triggering of railroad signal controls which can be used for example, to remotely request switch re-positioning. Track circuit: detects the absence or presence of a train on the tracks using AF on up to 4000 feet of tracks.



ALD: Actuation, locking and detection



Point machines

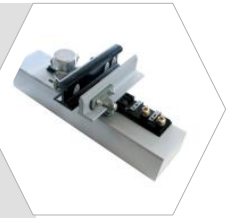
The point machine enables the actuation of the switch, its locking and its detection in end positions.

The Flexidrive range is a new generation of point machine with high reliability & very low LCC, and allowing trailable turnouts on main-lines.

The Easydrive point machine range consists of lightweight and compact drives that fit in-track, between the rails, for narrow urban environments like tunnels.

Switch position detector

The "Paulvé" detector is a product for detection of switch rail position. Its design allows quick installation at any place on the turnout (switch toe or heel). Recommended by the most demanding networks, the "Paulvé" switch position detector meets the NF F 52-151 and NF F 52-161 safety standards. It is used in high-speed applications and non-clamped switches. Being directly mounted onto the stock rail and connected to the blade, it is considered as the most reliable detection principle, with accurate and stable detection values.



Locking systems

Among various kinds of Vossloh external locks, the VCC - designed and widely deployed by Vossloh on all types of Vignole lines - is known as one of the safest external locks. Combined with its integrated lock detector, the VCC provides DIRECT locking and DIRECT DETECTION, at each rail. Such features make it recommended by UIC734 for high-speed applications.



Gate mechanisms

Vossloh provides signalling systems and equipment for level crossings, including the gate mechanism itself. Hydraulic and fail-safe design, referenced for more than 30 years at railways, depots and industrial areas, including hot and humid climates. Like every Vossloh solution, the gate can be customized as per YOUR requirements & operating rules.

Traffic detector

With its robust and innovative design, the traffic detector is an electro-mechanical device used to detect the passage of a train or any vehicle moving on the rails. The traffic detector is widely used on commercial lines. Main applications are traffic detection for level crossing and railway trackwork to prevent any incident.



LED signals

Vossloh provides LED signals for urban networks, adaptable to many requirements.



V-SIG Product line

References

- ALGIERS
- HONG KONG
- INDIA
- LUSAIL, QATAR
- NETWORK RAIL
- ONCF (MOROCCO NATIONAL RAILWAYS)
- PARIS
- RABAT, CASABLANCA, MAROC
- RIO DE JANEIRO
- SANTIAGO DE CHILE
- SINGAPORE
- SNCF (FRENCH NATIONAL RAILWAYS), FRANCE
- SOFSE
- ST PETERSBURG, RUSSIA
- SYDNEY, AUSTRALIA
- TAICHUNG
- TCDD
- TRAFIKVERKET



Vossloh experts are ready to help any railway or urban network to examine a specific technical and economic solution adapted to their operation and maintenance requirements.

For further information, please contact :

VOSSLOH COGIFER SA

Signalling Department

4, rue d'Oberbronn

67610 REICHSHOFFEN - FRANCE

Tel : +33 (0) 88 80 80 00

Fax : +33 (0)3 88 80 85 19

info@vossloh.com